



Brake Systems Adapted to the Train

AMETSIS PRESENTATION

It is now 15 years since AMETSIS was established back in 2004. Over these years, our company became consolidated in the railway sector as a benchmark for railway constructors and end-users worldwide.

AMETSIS has modern and welcoming facilities in Madrid: 3,500 m² of which 600 m² are offices and the remaining spaces, production area.

Our business volume has increased reaching a €3.5 million EUROS average billing over the last three financial years. AMETSIS turnover keeps increasing.

We have a staff of 31 and continue hiring: 14 hold higher educational certificates (engineers and graduates) while the rest hold high preparation and the best technical knowledge.

We work with more than 50 suppliers providing at all levels: from the supply of machining to those elements shaping the brake systems.

WE WORK FOR Spanish customers, who use our equipment, spare parts, engineering and our training services such as RENFE – Metro de Madrid – Metro Roma – Metro Milano – Metro Mexico Algiers Metro - Bilbao Metro - Pittsburgh Metro, among others and builders such as TALGO, CAF, SIEMENS, ALSTOM, BOMBARDIER, STADLER, HITACHI, among others.

We make available in the railway market 20,000 references: to be used for end customers in AMETSIS equipment and to the provision of preventive maintenance elements (kits) and valves.

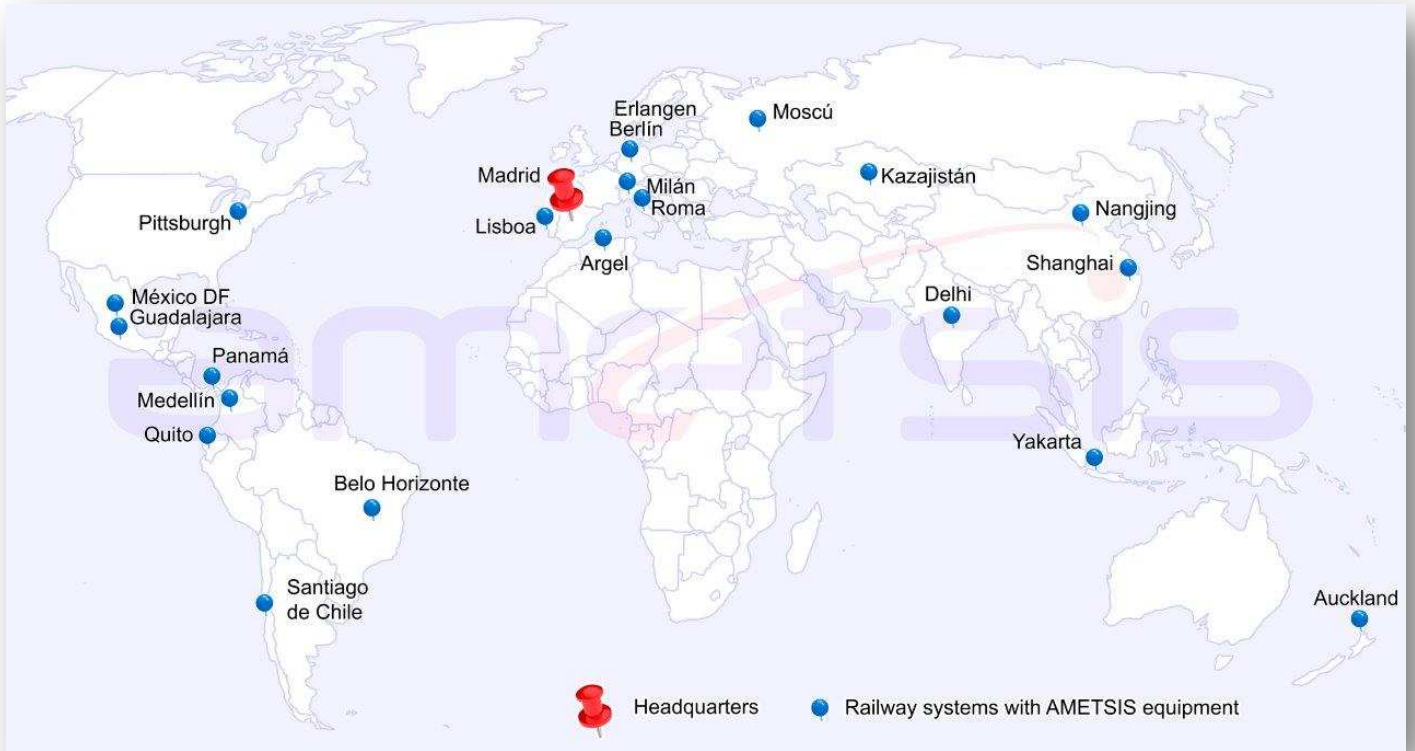
AMETSIS provides solutions meeting our customers and clients needs, collaborating with both of them in the development of both new products and the rehabilitation of existing equipment, providing ad hoc solutions for test benches and staff training.

The high reliability of our products and services based on knowledge and experience in railway safety systems make AMETSIS a reference company for the supervision and tuning of all brake systems of all kinds of trains: towed vehicles, EMUS and DEMUS units, pneumatic and hydraulic equipment and both pneumatic / hydraulic equipment.

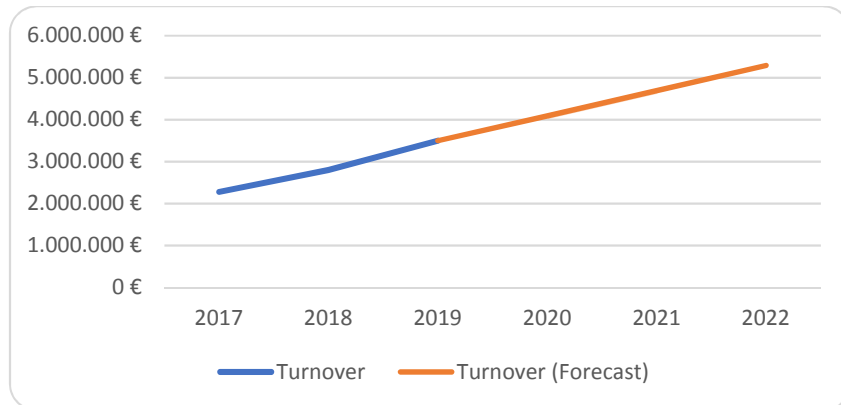
Thanks to our 15 years of know-how and experience, demanding quality control process and a particular focus in R&D we can offer this wide range of AMETSIS products and services: we can supply any type of train with complete brake systems: both pneumatic, hydraulic and electro / pneumatic.



INTERNATIONAL PRESENCE



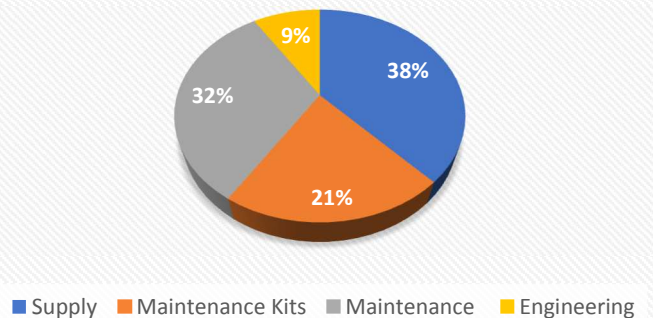
FUTURE PROSPECT



HUMAN CAPITAL



ACTIVITY



ENGINEERING AND TECHNICAL CONSULTANCY



Due to the high professional qualification of AMETSIS staff, one person accounts more than 50 years of experience, our company is reference in railway engineering sector. For this reason, AMETSIS can **develop** in an **innovative** way all the elements conforming railway brake equipment using new working tools that make it easier for the customer to both implement equipment and perform maintenance tasks.

In AMETSIS, we constantly **advise** our customers while participating actively on those modifications required in equipment in service (retrofits) or on the necessary tools for the maintenance of the units (test benches, tools, among others).

INTEGRAL MAINTENANCE OF BRAKING SYSTEMS

- Remodeling braking systems
- Preventive / corrective maintenance of braking systems
- Test benches
- Kits and maintenance parts
- AMETSIS owns his own maintenance workshop



Test bench for components and brake system for RENFE high-speed trains series 103,104, 114 and 253

		Referencia: Q5153 Denominación: Kit de sustitución de compresor VV230/180-2
Página: 1 de 3	Revisión: 06	ECO: 6736 Fecha: 26/02/2019

Notas:
 Versión Comercial
 Recoer las juntas de cobre antes de su montaje
 Almacenar en zona oscura y a temperatura no superior a 30°C.
 No usar piezas con más de 12 meses de almacenaje.
 Se recomienda el cambio sistemático de las piezas de este kit en un tiempo no superior a 5 años desde su montaje o fecha de fabricación.

1 x DW10955 (A18 x 24)	6 x 200102 (compr Ø95 x 3)	6 x 200101 (engra. Ø95 x 5)
8 x 200296 (Ø 26 x 1,2)	2 x 203326 (compr Ø85 x 3)	2 x 203325 (engra Ø 85 x 5)
2 x DW15107	1 x DW14833	1 x DW14832
1 x DW14882	1 x DW14883	3 x 204002 (A22,3 x 27)



RAILWAY BRAKE COMPLETE SYSTEMS BOGIE EQUIPMENT

Suspension Control

- Overflow Valve
- Level Valve
- Medium Pressure Valve
- Safety Valve

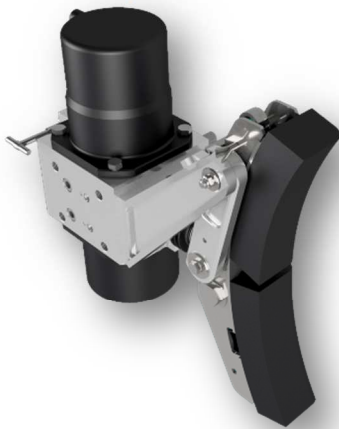


A-SV-1-2 Safety Valve

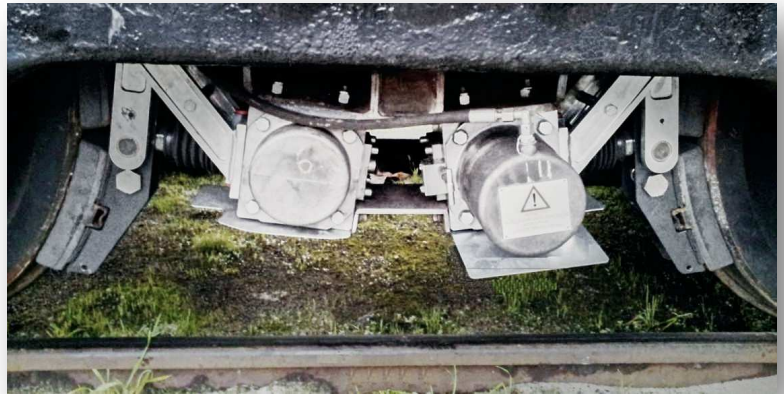


A-VNL-1 Level Valve

Brake Cylinders. Hydro-Pneumatic Converters and Brake Clearance Regulators



ABFP and ABF Brake Block (wheel)



AUXILIARY EQUIPMENT

- Auxiliary Panels
- Sand Boxes
- Low and High Frequency Horns
- A-CAC-1 Auxiliary Compressor A-CAC-1



High/Low
Frequency
Horn

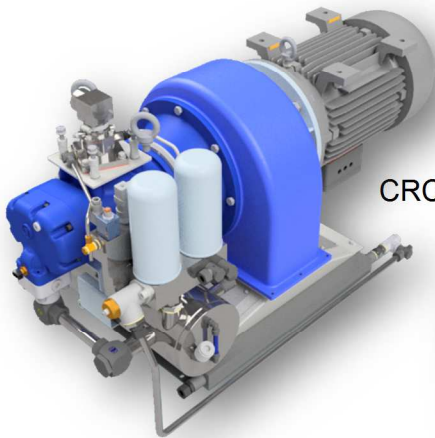


Wireless Remote Emergency Handle



Wheel Cleaner Cylinder

RAILWAY BRAKE COMPLETE SYSTEMS PRODUCTION AND COMPRESSED AIR TREATMENT UNITS



CRC 2000

CRC Railway Compressors



ASA 1

ASA Air Dryers



ASU 300

ASU Air Treatment - Complete Unit

BRAKE AND ANTI-SKID CONTROL – BOX EQUIPMENT

Brake Control Equipment



Speed sensor



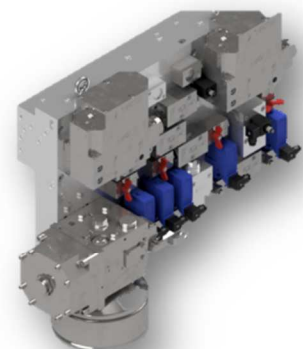
A-EA-R1/2 Anti-Skid electrovalve



Emergency Valve



Control Electronic Equipment



Control Brake Panels

WORKING UNDER THE PREMISE OF QUALITY

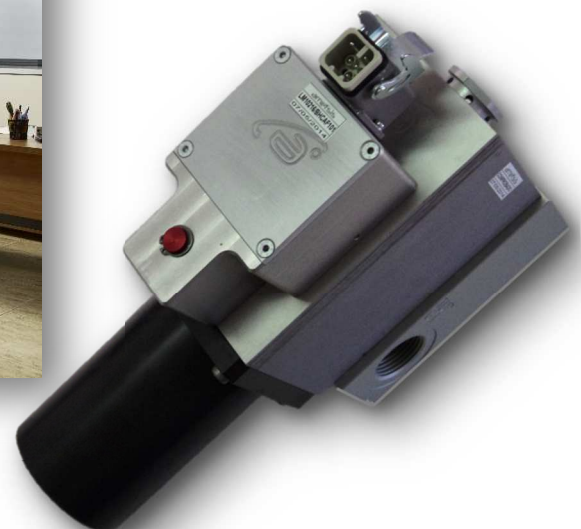
AMETSIS quality policy ensures that entire structure of our company, organization and means performed by AMETSIS for Engineering, development and marketing of all its products always meet the most demanding requirements by our customers and applicable standards, amongst which UNE-EN-ISO 9001-2015.

AMETSIS is currently through IRIS certification process: our main objective is increasing the quality and reliability of the material and services by improving the whole supply chain



R & D & I: A BELIEF IN THE FUTURE

Human and economic resources investment for research, development and innovation areas is a priority for AMETSIS at all levels. There are many examples of new devices developments that provide improvements in terms of **safety** and performance of the equipment of the brake systems. Among others: SICODE derailment detector, alarm handle with wireless reset by remote control, box bearing DTR temperature detector grease.



SICODE-EP® Derailment Detector

OUR MAIN STRENGTH: HUMAN CAPITAL

ENSURING THE BEST PERFORMANCE



Issue Date: 09-2019

AMETISIS INGENIERIA Y ASESORIA TECNICA S.L.
C/ Valle de Tobalina 60
28021 Madrid (SPAIN)
Tel.: +34 91 710 97 30
comercial@ametsis.com



www.ametsis.com